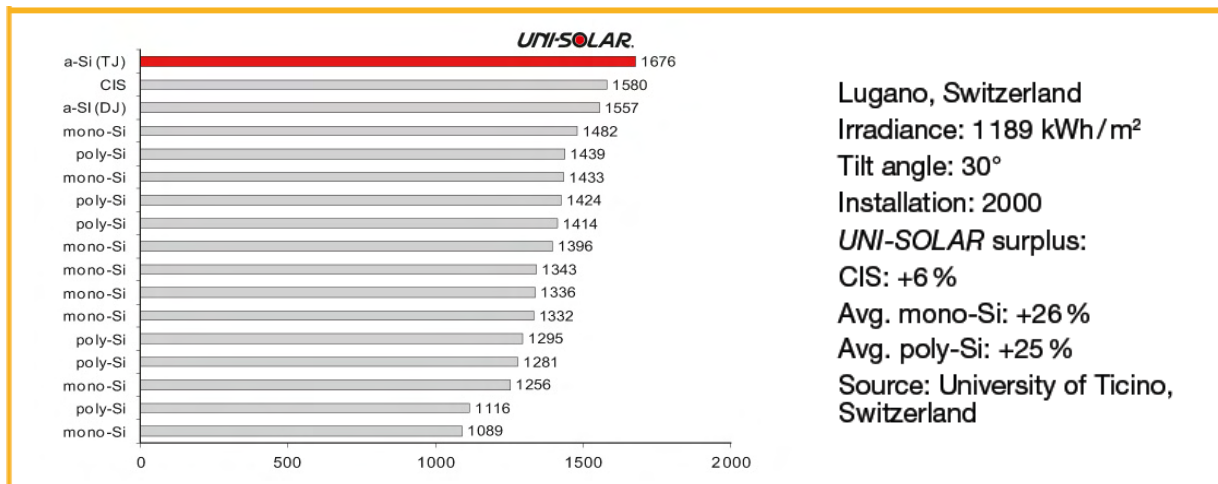
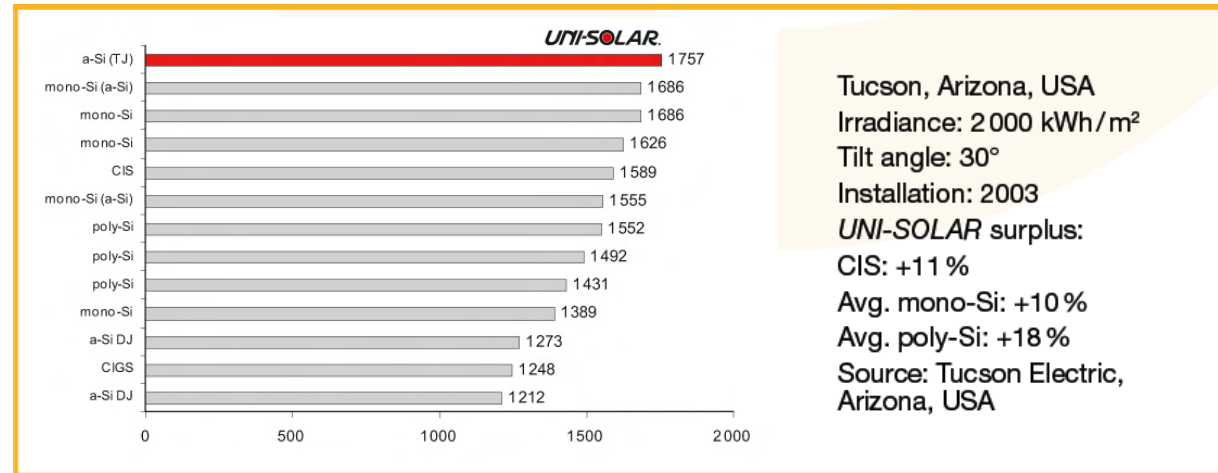


## 2.6 Side-by-Side Comparison

- *UNI-SOLAR* PV-laminates have an excellent performance compared to other PV-technologies whether crystalline silicon or thin-film cells
- Reasons are:
  - Exceptional low and diffuse light performance
  - Bypass diodes across each cell
  - Low temperature coefficient
  - Annealing process



## 2.7 Projected Versus Actual Energy Yield

- UNI-SOLAR PV-laminates perform according to the predicted measurements given to each customer as basis for decision making

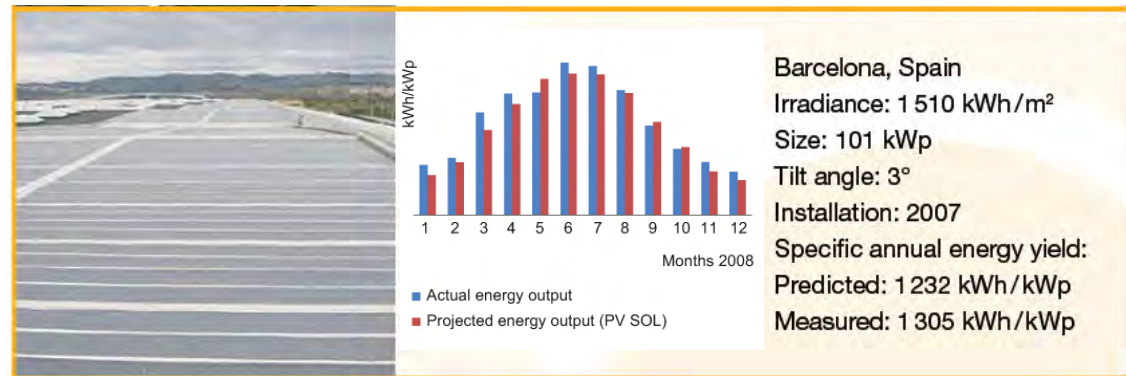
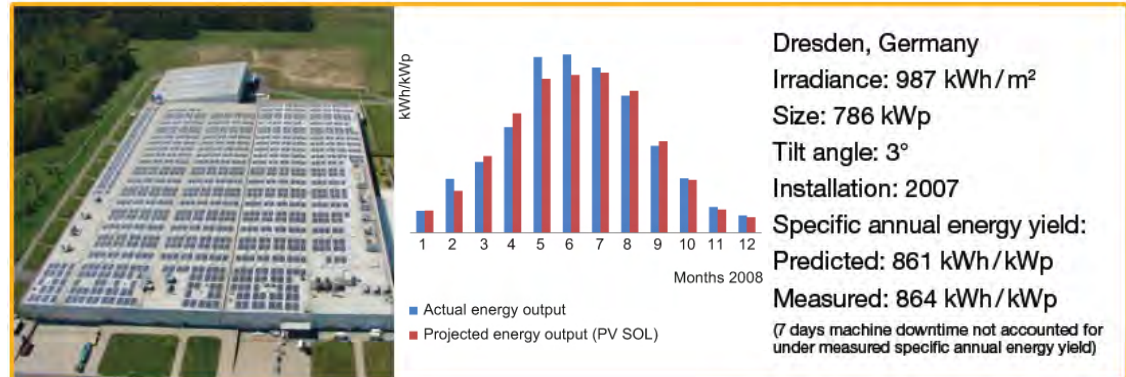
**Reliable energy production**

+

**Feed-in tariffs**

=

**Stable and predictable return on investment**



# Results | Side-by-side comparison – flat vs tilt

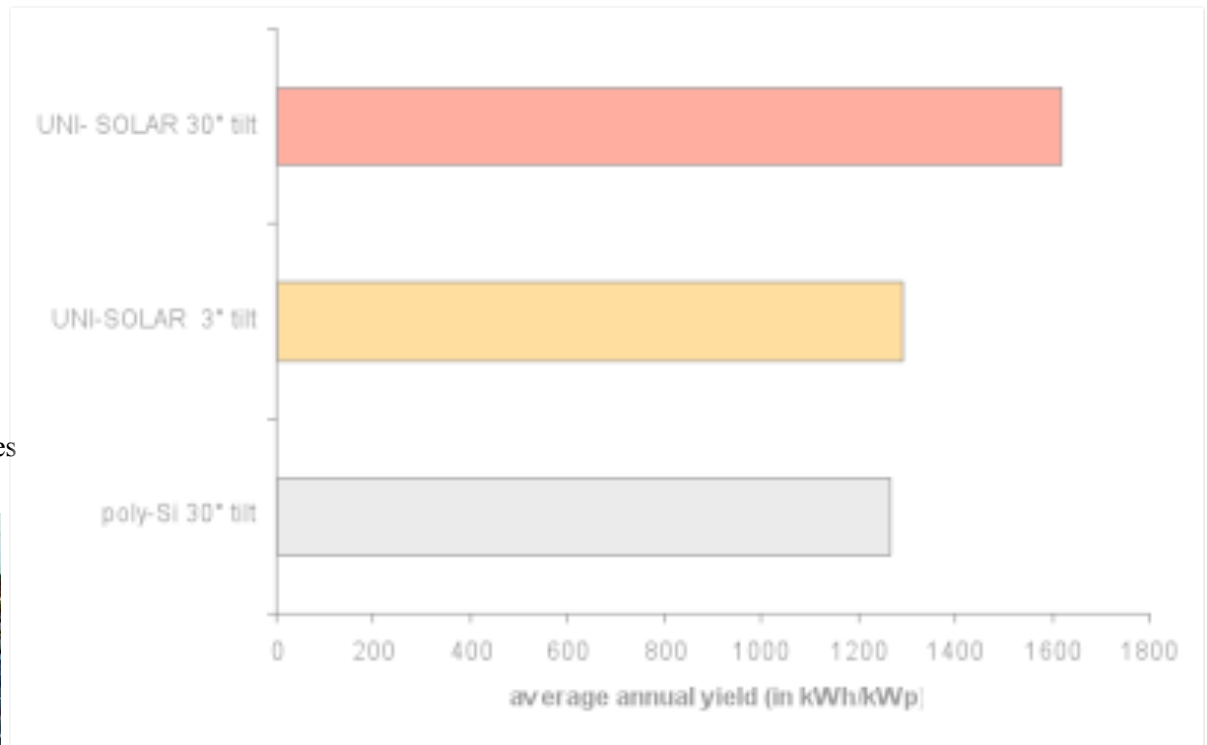
Results Live Oak Business Park, Santa Cruz, CA, USA



UNI-SOLAR framed modules and poly-Si modules at 30° tilt, on flat roof (SPF)



UNI-SOLAR laminates at < 3° tilt, on membrane roof (SPF)



Site: Santa Cruz, California, USA  
Horz. Irradiance: kWh/m<sup>2</sup>  
Tilt: 3° and 30°  
Size: 2-3 kWp  
Inverters: SMA2500  
Installed Year: 2003